

CABRILLO BEACH YACHT CLUB

SAILING INSTRUCTIONS AND COURSE CHART 2018

SECTION 1. RACING RULES

- A. All races shall be governed by **Racing Rules of Sailing 2017-2020**, *Including US Sailing Prescriptions*, (RRS), the NOR and the Sailing Instructions, which will prevail in case of a conflict. Any amendments to these Sailing Instructions or Special Written Instructions will be approved by the Race Committee and posted on the Racing Bulletin Board at least 1.5 hours prior to the first race the day they will apply. Oral instructions may be given on the water from the Race Committee when a Code flag "L", come within hail flag is displayed.
- B. **STARTING SIGNALS:** All races will be started in accordance with rule 26 with five (5) minute intervals unless changed by the NOR.
- For the first class:** Class flag - Warning; P flag - Preparatory; Class flag remove - Start. The warning signal for each succeeding class will be made with or after the starting signal of the preceding class. If a postponement is signaled, a new warning signal will be made for the class postponed and all following classes.
- C. **START FINISH LINE:** The start -finish line will be between the base of staffs displaying orange flags. When a split start -finish line is used, the start line will be on the starboard side of the RC vessel and the finish line on the portside. The start-finish line is not restricted.
- D. **STARTING LINE LIMIT MARK:** The RC may place a white flag mark near the RC vessel as a starting line limit mark that shall be left on the same side as the RC vessel. However, the starting line shall still be between the staffs of orange flags. Rule 31 apply to this mark and section C does not apply.
- E. **GENERAL RECALL:** Rule 29.2 applies'. If a class is recalled a second time, it shall go to the end of the starting order.
- F. **INDIVIDUAL RECALL:** OCS (On Course Side) starters shall be recalled by one sound signal and hoisting of code flag "X". When all recalled boats have started properly, "X" will be lowered except that in no case will "X" be displayed for more than four (4) minutes. It is the responsibility of each yacht to start properly.
- G. **HAILING THE RACE COMMITTEE:** After the first warning signal and until the race has been concluded, there shall be no communication between yachts racing and the Race Committee except as provided for in the Racing Rules or pertaining to safety.
- H. **SUNSET RULE:** If no yacht of a class has finished by sunset, the race will be abandoned for that class unless changed by the Supplemental Sailing Instructions, (SSI) or NOR.
- I. **TIME LIMIT:** Boats failing to finish within thirty (30) minutes plus their handicap correction after the first boat in the class finishes may be scored DNF. This changes RRS 35
- J. **DANGEROUS SITUATIONS:** Boats that hamper ocean going commercial or naval vessels, causing a dangerous situation while racing shall be subject to protest. All boats shall also stay clear of designated restricted dangerous construction areas, dredging, or other hazards and shall comply with restrictions placed on the use of any navigable waters by local governments and the U.S. Coast Guard. Such a protest may be made by the Race Committee or another yacht.
- K. **CHECKING IN:** Each boat shall sail past the stern of the RC on starboard tack and check in and be acknowledged prior to the warning signal for the first race of the day for the first class or she shall be scored as DNC.
- L. **BOATS RETIRING:** A boat that retires from a race SHALL notify the RC before leaving the race area when possible or shall contact the CBYC office in person or by telephone (310) 519-1694 within one half hour after returning to shore. Failure to comply with this Sailing Instruction may result in a DSQ for the race or entire regatta as determined by the protest committee. The Race Committee will attempt to monitor Channel 16 and communicate on channel 72.
- M. **COURSE CHANGES:** In the event of a major wind shift when using one of the supplemental courses, the RC may change the location of the marks Under Rule 33. The new mark shall be orange with a black band or yellow tetrahedron.

SECTION 2. CLASS RULES AND REGULATIONS

- A. The rules and regulations of one design and handicap classes must be accepted by the Race Committee and on file in advance of the regatta. Each boat shall conform to such rules in order to race, but it is the obligation of each fleet to observe and enforce its own regulations.
- B. No special agreements among boats, change of sail numbers, duplication or lack of sail numbers shall be recognized unless accepted in advanced by the RC.

SECTION 3. ALTERNATE PENALTIES: Appendix V, V1 shall apply

The first two sentences of rule 44.1 are changed to: 'A boat may take a One-Turn Penalty when she may have broken a rule of Part 2 or rule 31 while *racing*. However, when she may have broken a rule of Part 2 while in the *zone* around a *mark* other than a starting *mark*, her penalty shall be a Two-Turns Penalty.'

SECTION 4. PROTEST

Protests shall comply with Rule 61. The protesting boat shall identify the protested boat to the RC and be acknowledged before leaving the race area. Protests are to be on forms provided by CBYC and filed at the CBYC office no later than one hour after the RC returns to the dock.

SECTION 5. SCORING

Scoring shall be the Low point system as stated in rules 90.3 and Appendix A, except that there shall be no throw outs unless stated in the NOR or SSI. Ties shall be resolved by rule A8.

SECTION 7. HANDICAPPING

Handicapping shall be as described in the NOR or per class rules.

SECTION 8. FLAG AND SOUND SIGNALS MOST COMMONLY USED

Answering Pennant "AP" (red, white vertical stripes) - POSTPONEMENT: Two sound signals. (one sound signal when lowered).

Code flag "C" (horizontal red, white, & blue stripes) - COURSE CHANGE WHILE RACING: Repetitive sound signals.

Code flag "H" (red, white vertical) - HOME: With Code Flag "N" or "AP" further signals made ashore.

Code flag "I" (yellow, black dot) - ROUND THE ENDS: (One long sound signal when lowered).

Code flag "L" (quartered, black and yellow squares) - COME WITHIN HAIL: One sound signal.

Code flag "M" (blue, white cross diagonally) - MARK REPLACEMENT: Repetitive sound signals.

Code flag "N" (blue and white checkered) - ABANDONMENT: Three sound signals. (One sound signal when lowered). Further signals made in race area.

Code flag "S" (white, blue square center) - COURSE SHORTENED: Two sound signals.

Code flag "U" (quartered, red and white squares) - Rule 30.3 in effect: (One long sound signal when lowered).

Code flag "X" (blue cross on white) - INDIVIDUAL RECALL: One sound signal.

Code flag "Y" (red and yellow diagonal stripes) - LIFE JACKET: One sound signal

Code flag "Z" (Red, Black, Yellow, and blue triangles) – 20% STARTING PENALTY: (One long sound signal when lowered).

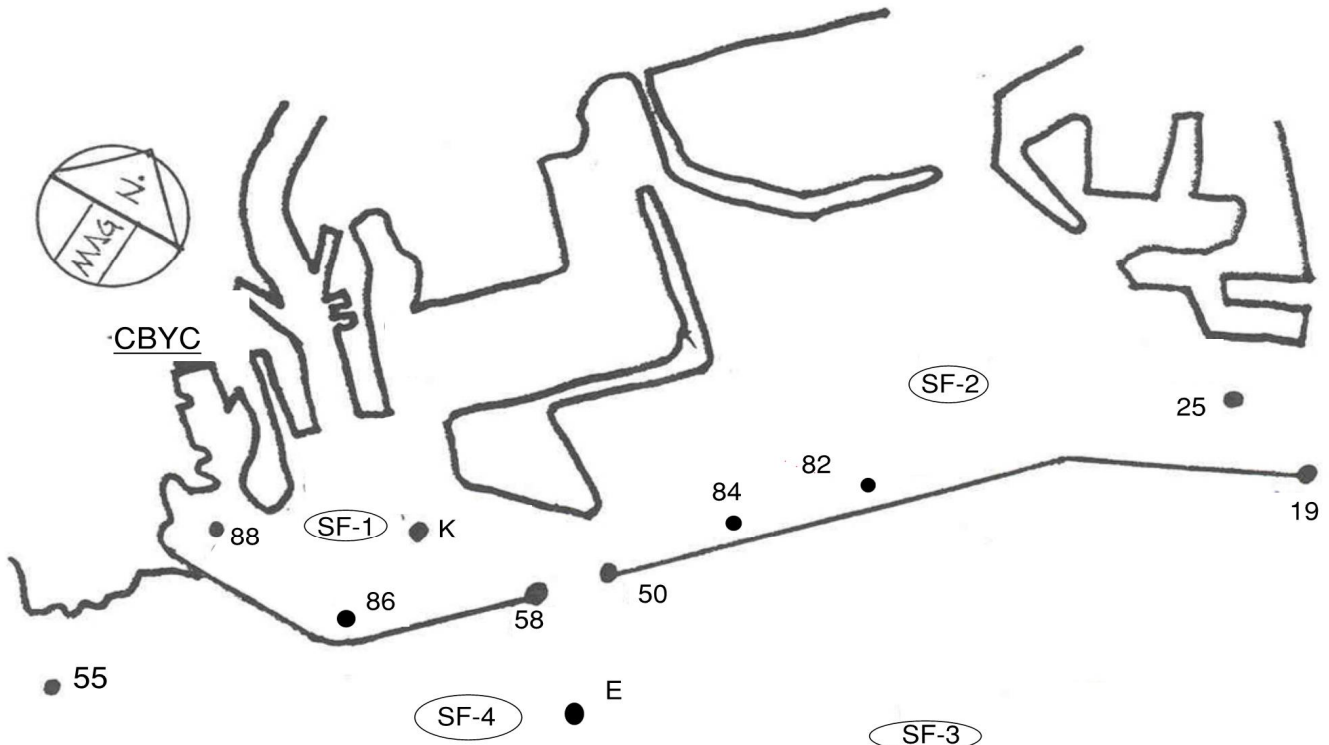
Black Flag - Rule 30.4 in effect: (One long sound signal when lowered).

First Substitute pennant (yellow on blue triangle) - GENERAL RECALL: Two sound signals. (One sound signal when lowered).

SECTION 7. SIGNALS MADE ASHORE

Signals made ashore will be displayed on the CBYC flagpole situated outside the club. Notices shall be posted on the Racing Bulletin Board outside the CBYC entrance.

CABRILLO BEACH YACHT CLUB 2018 COURSE CHART



INSIDE UPPER BREAKWATER

S/F – START FINISH LINE #1
Approximately 0.7 NM. SE. of Cabrillo Marina

0 Special course posted on the RC Boat

Start at SF-1 and Finish at 88/F

1	SF	88	K	F						2.0
2	SF	88	K	88	K	F				3.5
3	SF	88	K	88	K	88	K	F		5.0
4	SF	88	84	F						4.4
5	SF	88	84	88	K	F				5.9
6	SF	88	84	88	84	F				8.4
7	SF	88	82	F						5.6
8	SF	88	82	88	K	F				7.1
9	SF	88	25	SF						9.1
10	SF	88	86	K	F					2.4
11	SF	88	86	K	88	K	F			4.1
12	SF	88	86	84	F					4.7
13	SF	88	86	84	88	86	84	F		8.8
14	SF	88	55	K	F					7.5
15	SF	88	55	K	88	K	F			8.8
16	SF	88	55	82	F					9.9

Start and Finish at SF-1

21	SF	88	K	SF						1.5
22	SF	88	K	88	K	SF				3.0
23	SF	88	K	88	K	88	K	SF		4.5
24	SF	88	84	SF						4.0
25	SF	88	84	88	K	SF				5.5
26	SF	88	84	88	84	SF				8.0
27	SF	88	82	SF						5.1
28	SF	88	82	88	K	SF				6.6
29	SF	88	25	SF						8.6
30	SF	88	25	88	K	SF				10.1
31	SF	88	82	88	82	SF				10.2
32	SF	88	55	K	SF					7.0
33	SF	88	55	K	88	K	SF			8.3
34	SF	88	55	82	SF					9.4
35	SF	88	86	K	SF					1.9
36	SF	88	86	K	88	K	SF			3.4
37	SF	88	86	84	SF					4.2
38	SF	88	86	84	88	86	84	SF		8.4

DISTANCES SHOWN ARE APPROXIMATE

SUPPLEMENTAL COURSES

51	SF	W	L	SF						
52	SF	W	L	W	L	SF				
53	SF	W	L	W	L	W	L	SF		
54	SF	W	R	L	W	L	SF			
55	SF	W	L	W	R	L	W	L	SF	
56	SF	W	R	L	W	L	W	R	L	SF
57	SF	W2	L	SF						
58	SF	W2	L	W	L	SF				
59	SF	W2	L	W2	L	SF				
60	SF	W	L	W	SF					
61	SF	W	SF							
62	SF	W	L2	W	SF					
63	SF	W	L2	W	L2	W	SF			
64	SF	W	R	L2	W	SF				
65	SF	W	L2	W	R	L2	W	SF		
66	SF	W	R	L2	W	L2	W	R	SF	
71	SF	88	55	E	K	88	SF			

MARKS: All marks are passing marks. All marks are left to port unless otherwise denoted by a small "s" for starboard.

W	Orange Inflatable, windward of SF (and L2)
W2	Orange Inflatable, windward of W
R	Orange Inflatable, reach mark
L	Orange Inflatable, leeward of SF
L2	Orange Inflatable, approx. 30 yds to windward of SF
K	Green channel marker G "11"
19	East end of Middle Breakwater
25	Green Channel marker Buoy – G "3" ~ 0.4 NM W. of mark "19"
50	West end of Middle Breakwater
55	Pt. Fermin Whistle Buoy – R "6" F1 R 4 sec. Whistle
58	LA light - East end of San Pedro Breakwater
82	Yellow Spar Buoy ~ 1.0 NM. NE. of mark "50"
84	Yellow Spar Buoy ~ 0.5 NM. NE. of mark "50"
86	Yellow Marker Buoy ~ 0.9 NM. SW of mark "58"
88	Yellow Spar Buoy ~ 200 yds NE of north end of "Fishing Pier"
SF	Start and Finish Line between staffs displaying orange flags
E	Green LA Channel Marker Buoy – G "3" ~ 1.4 NM SE. of LA Light mark "58"
F	Finish Line between staff displaying orange flag on RC boat and Mark 88.