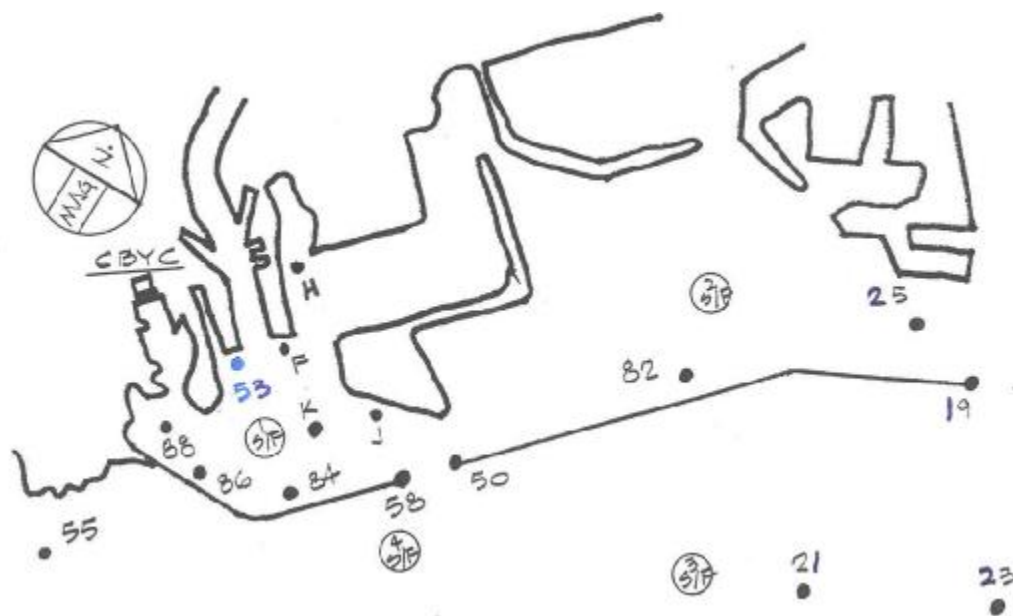


CABRILLO BEACH YACHT CLUB 2011 COURSE CHART



INSIDE UPPER BREAKWATER

S/F – START FINISH LINE #1
Approximately 0.7 NM. SE. of Cabrillo Marina

0	Special course posted on the RC Boat						
1	SF 88 K SF						1.2
2	SF 88 K 88 K SF						2.4
3	SF 88 82 SF						4.2
4	SF 88 82 88 K SF						5.5
5	SF 88 25 SF						8.1
6	SF 88 82 88 82 SF						9.6
7	SF 88 25 88 82 SF						12.9
8	SF 88 55 K SF						6.6
9	SF 88 55 K 88 K SF						7.6
10	SF 88 55 K 88 SF						7.3
11	SF 88 55 82 SF						9.0
12	SF 88 55 82 88 SF						10.0
13	SF 88 55 21 K SF						11.5
14	SF 88 55 21 19 SF						13.6
15	SF 88 55 21 55 K SF						15.6
16	SF 88 55 23 19 SF						14.6
17	SF 88 55 59 K SF						17.4
18	SF 88 Y K SF						24.3
19	SF 88 J SF						1.8
20	SF 88 J 88 K SF						3.0
21	SF 88 J 88 J SF						3.4
22	SF 86 F SF						2.1
23	SF 86 F 86 F SF						4.1
24	SF 86 H SF						3.0
25	SF 86 H 86 H SF						6.0
26	SF 86 59 F SF						15.2
27	SF 84 53 SF						1.9
28	SF 84 53 84 53 SF						3.8
29	SF 84 53 84 53 84 53 SF						5.7

INSIDE MIDDLE BREAKWATER

SF – START/FINISH LINE #2
Approximately 1.5 NM. NE. of LA Light

30	SF 88 25 SF						8.9
31	SF 88 23 19 SF						10.8
32	SF 88 82 88 25 SF						13.0
33	SF 55 21 19 SF						13.5
34	SF 55 23 19 SF						14.8

DISTANCES SHOWN ARE APPROXIMATE

SUPPLEMENTAL COURSES

Courses may be sailed at any SF area

50	SF	W	L	SF						
51	SF	W	L	W	L	SF				
52	SF	W	L	W	L	W	L	SF		
53	SF	W	R	L	W	L	SF			
54	SF	W	L	W	R	L	W	L	SF	
55	SF	W	R	L	W	L	W	R	L	SF
56	SF	W2	L	SF						
57	SF	W2	L	W	L	SF				
58	SF	W2	L	W2	L	SF				
59	SF	W	L	W	SF					
60	SF	W	SF							
61	SF	W	L2	W	SF					
62	SF	W	L2	W	L2	W	SF			
63	SF	W	R	L2	W	SF				
64	SF	W	L2	W	R	L2	W	SF		
65	SF	W	R	L2	W	L2	W	R	SF	
66	SF	W2	SF							
67	SF	W2	L2	W	SF					
68	SF	W2	L2	W2	SF					
69	SF	W2	L2	W2	L2	W2	SF			

MARKS: All marks are passing marks. All marks are left to port unless otherwise denoted by a small "s" for starboard.

- W Orange Inflatable, windward of SF (and L2)
- W2 Orange Inflatable, windward of W
- R Orange Inflatable, reach mark
- L Orange Inflatable, leeward of SF
- L2 Orange Inflatable, approximately 50 yds to windward of SF
- F Green channel marker buoy #1, 50 yds S of Reservation Point
- H Green channel marker buoy #5, 50 yds south of fish harbor entrance
- J Red Channel marker buoy "R10"
- K Green channel marker
- 19 East end of Middle Breakwater
- 21 Yellow lighted buoy "B" – F1. Y 6 sec, 1.6 NM. At 194 deg. Mag. from E. end of Middle Breakwater
- 23 Yellow lighted buoy "A" – F1. Y 4 sec – 1.8 NM. At 127 deg. Mag. from E. end of Middle Breakwater
- 25 Green Channel marker Buoy – "#3" – 0.4 NM W. of "19"
- 50 West end of Middle Breakwater
- 53 Orange Inflatable – 50 yds S. of LA Harbor Channel entrance
- 55 Pt. Fermin Whistle Buoy – R "6" F1 R 4 sec. Whistle
- 58 LA light - East end of San Pedro Breakwater
- 59 Yellow Turning Buoy "W" approx 33:37.33N/118:17.60W
- 82 Yellow Spar Buoy – 1 NM. NE. of "50"
- 84 Orange Inflatable– 0.5 NM. SW. of "58"
- 86 Orange Inflatable– 1.0 NM. SW. of "58"
- 88 Yellow Spar Buoy – 100 yds S. of Green Channel marker Buoy #5
- Y Yellow Channel Buoy Y"SP" aprox 33:37.30N/118:21.74 W
- SF Start and Finish Line between staffs displaying orange flags